



Double Sided Lightweight Winter Jacket Versatile Down Puffer Jacket Women Chic

Our Product Introduction

Basic Information

- Place of Origin: made in CHINA
- Brand Name: ICEBERA
- Model Number: GWD3857I



Product Specification

- Fabric Type: Polyester
- Lining Fabric: Polyester
- Filling: Polyester
- Hat Type: Undetachable
- Length: Long
- Style: Moderate
- Thickness: Moderate
- Highlight: lightweight winter jacket versatile, versatile down puffer jacket women, down puffer jacket women chic



More Images



for more products please visit us on ice-bear.com

Product Description

Double-Sided Versatile Dress: Switch Styles Anytime, Economical & Chic!

Product features:

This is a very popular double-sided wear clothes, the inside and outside can be switched at any time and anywhere according to the mood, the style is simple and generous, the inside and outside color jumps, so that you can spend the money of a dress to buy two different styles, different colors of clothes. The fabric is slightly textured, the shape is slim but not bloated, and the workmanship is excellent, just the one thing that is missing in your wardrobe.

Size:42-50

Size	Length	Bust	Hem	Cuff	Sleeve length
S/42	98	104	110	29	64
M/44	100	108	114	30	65
L/46	102	112	118	31	66
XL/48	104	116	122	32	67
2XL/50	104	120	126	32	67

Color display:White/Rose



White(G002)



Rose (G375)

Detail display:

Windproof stand collar

Stand collar and big hood with adjustable drawcord, windproof and warm, protect neck.

Reversible wear

Two sides of the color clashing design, double-sided wearable, the price of one jacket, have 2 kinds of wearing experience.

Ribbed windproof cuff

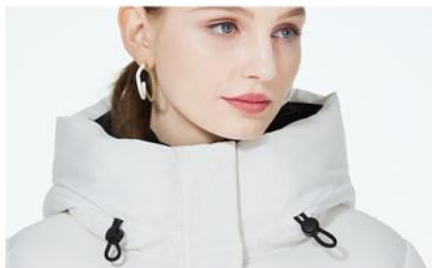
With elastic knit cuffs for a snug wrist fit and windproof warmth. High freedom, unrestricted and comfortable.

Two-way zipper design

Two-way zipper is highly easy to move, put on and take off.



DETAIL DISPLAY



Windproof stand collar

Stand collar and big hood with adjustable drawcord, windproof and warm, protect neck.



Reversible wear

Two sides of the color clashing design, double-sided wearable, the price of one jacket, have 2 kinds of wearing experience.



Ribbed windproof cuff

With elastic knit cuffs for a snug wrist fit and windproof warmth. High freedom, unrestricted and comfortable.



Two-way zipper design

Two-way zipper is highly easy to move, put on and take off.

SUNWAY
北京日伟国际服装有限公司
Beijing sunway international garment co.,ltd.

ICE BEAR

+86 18513366091

18513366091@163.com

ice-bear.com

1102, 10th Floor, Building 5, No. 8, Ronghua Middle Road, Beijing Economic and Technological Development Zone