

Black Down Jacket With Hood Womens Stand Up Collar

Our Product Introduction

for more products please visit us on ice-bear.com

Basic Information

- Place of Origin: made in CHINA
- Brand Name: ICEBERA
- Model Number: GWD38021
- Minimum Order Quantity: 20 pieces for one colour
- Price: 30-32 \$
- Delivery Time: in 5 work days
- Payment Terms: T/T, Western Union, MoneyGram, cash
- Supply Ability: stock

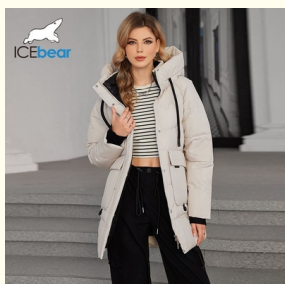


Product Specification

- Features: Windproof/Warm/Soft
- Thickness: Thick Material
- Care Instructions: Machine Washable
- Color: Black
- Product Category: Woman Winter Coat
- Jacket Type: Cotton/Down Jacket
- Closure: Zipper And Snap Fastener
- Pocket Type: Big Pockets
- Highlight: **Stand-up Collar Down Jacket ,
Black Down Jacket, Womens Down Jacket**



More Images



Product Description

Product Description:

This jacket comes in two types - Cotton and Down Jacket. The Cotton Jacket is a classic option that provides excellent warmth and comfort. The Down Jacket, on the other hand, is a mid-length jacket that is filled with high-quality down to provide unbeatable warmth and insulation.

The Woman Winter Coat is designed with a classic style that is both timeless and sophisticated. It is a perfect choice for women who want to look their best while staying warm and comfortable during the winter months. The mid-length jacket is versatile and can be paired with any outfit, making it a great addition to any wardrobe.

The coat features a zipper and snap fastener closure that provides a secure and snug fit. This ensures that the jacket stays in place even during windy conditions. The windproof feature of this jacket is a game-changer, especially during the winter season when the wind chill factor can make temperatures feel much colder than they actually are.

The Woman Winter Coat comes in a size range of 42-50, making it accessible to a wide range of women. It is important to note that sizing is crucial to ensure maximum warmth and comfort. Getting the right size will ensure that the coat fits perfectly, providing the best insulation against the cold weather.

In conclusion, the Woman Winter Coat is an excellent choice for women looking for a down jacket mid-length coat that is both warm and soft. The classic style and versatile design make it a perfect addition to any winter wardrobe. The windproof feature and zipper and snap fastener closure provide added protection against the harsh winter weather. The size range of 42-50 ensures accessibility to a wide range of women, making it an excellent choice for those looking for a warm and stylish winter coat.

Features:

Product Name: Woman Winter Coat

Product Category: Woman Winter Coat

Jacket Type: Cotton/Down Jacket

Fabric Type: Polyester

Closure: Zipper And Snap Fastener

Care Instructions: Machine Washable

Features:

Fashion down jacket

Down jacket with hood

Mid length down jacket

Technical Parameters:

Product Name	down jacket with hood, womens mid length down jacket, mid length down jacket women's
Product Category	Woman Winter Coat
Features	Windproof/Warm/Soft
Size Range	42-50
Lining Fabric	Polyester
Available Colors	Black/Pink Green/Grayish green/Gray Beige/Blue
Color	Black
Closure	Zipper And Snap Fastener
Collar Type	Stand-up Collar & Hood
Color Display	Gray-green/Black/Light Brown

Applications:

With its warm and durable design, this down jacket mid length is suitable for a variety of outdoor activities, including hiking, skiing, or simply running errands in the city. The windproof material ensures that you stay well-insulated, while the soft fabric provides a comfortable fit all day long.

Whether you're looking for a coat for women for daily wear or for special occasions, the ICEBERA GWD3802I Woman Winter Coat is a great choice. Its classic design makes it versatile enough to wear with a variety of outfits, from formal dresses to casual jeans and a t-shirt.

With a minimum order quantity of 20 pieces for one colour, this coat is perfect for retailers who want to stock up on high-quality winter wear. The price of this jacket ranges from 30-32\$, and payment can be made through T/T, Western Union, MoneyGram, or cash.

This mid length down jacket women's is machine washable, making it easy to care for and keep clean. It is also available in both cotton and down jacket types, depending on your preferences and needs.

With a stock supply ability, this jacket can be delivered in 5 work days, ensuring that you receive it quickly and without delay. So why wait? Order your ICEBERA GWD3802I Woman Winter Coat today and stay warm and stylish all winter long!

Support and Services:

Our Woman Winter Coat product comes with comprehensive technical support and services to ensure your satisfaction. Our team of experts is dedicated to providing you with the following:

Product information and specifications

Installation and setup guidance

Troubleshooting assistance

Product repair and maintenance services

Warranty support and claims

Feel free to contact us if you have any questions or concerns about your Woman Winter Coat product. We are committed to providing you with the best support and services possible.

Packing and Shipping:

The woman winter coat will be carefully placed in a plastic bag to protect it from moisture

The plastic bag will be placed inside a sturdy cardboard box for added protection during shipping

The package will be sealed with packing tape to ensure it stays closed during transit

Shipping:

Once the order is placed, the woman winter coat will be shipped within 1-2 business days

We offer free standard shipping within the United States, which typically takes 5-7 business days to arrive

Expedited shipping options are available for an additional fee

We also offer international shipping to select countries for an additional fee

Customers will receive a tracking number via email once the package has been shipped

FAQ:

Q: What is the brand name of this winter coat?

A: The brand name of this winter coat is ICEBERA.

Q: What is the model number of this winter coat?

A: The model number of this winter coat is GWD3802L.

Q: Where is this winter coat made?

A: This winter coat is made in CHINA.

Q: What is the minimum order quantity for this winter coat?

A: The minimum order quantity for this winter coat is 20 pieces for one colour.

Q: What is the price of this winter coat?

A: The price of this winter coat is between 30-32 \$.

Q: What are the payment terms for this winter coat?

A: The payment terms for this winter coat are T/T, Western Union, MoneyGram, and cash.

Q: What is the supply ability of this winter coat?

A: The supply ability of this winter coat is stock.

Q: What is the delivery time for this winter coat?

A: The delivery time for this winter coat is in 5 work days.









Size	Chest width	Girth of hem	cuff	Sleeves length	Product length	shoulder width
S/42	112	112	72.5	29	83	/
M/44	116	116	74	30	85	/
L/46	120	120	75.5	31	87	/
XL/48	124	124	77	32	89	/
2XL/50	128	128	77.5	32	89	/

Attention!!!

The size chart is for reference only.

In order to choose the size that suits you best, please contact customer service. Our professional customer service offers you professional advice.

For example, if bust = 114cm, you need + 10cm = 124CM.



SUNWAY
北京日华国际服装有限公司
Beijing sunway international garment co.,ltd.

ICE BEAR

+86 18513366091

18513366091@163.com

ice-bear.com

1102, 10th Floor, Building 5, No. 8, Ronghua Middle Road, Beijing Economic and Technological Development Zone